

RESOLUTION R-22-42

A RESOLUTION AUTHORIZING THE CITY MANAGER TO EXECUTE A CONTRACT WITH PLAYSCAPE RECREATION, LLC, IN THE TOTAL AMOUNT NOT TO EXCEED \$353,600.90, FOR THE REPLACEMENT OF THE TWO OAK GROVE PARK SHELTERS; PROJECT CP2357.

WHEREAS, one proposal was received for the replacement of the two Oak Grove Park Shelters, and that proposal from Playscape Recreation, LLC, in the amount of \$353,600.90 has been determined by the Director of Parks, Recreation and Cultural Arts to be an acceptable proposal.

NOW, THEREFORE, BE IT RESOLVED BY THE COUNCIL OF THE CITY OF GLADSTONE, MISSOURI, AS FOLLOWS:

THAT, the City Manager of the City of Gladstone, Missouri, is hereby authorized to execute a contract with Playscape Recreation, LLC, for work as outlined in the agreement for a total amount not to exceed \$353,600.90.

FURTHER, THAT, funds for such purpose are authorized from the American Rescue Plan Act.

INTRODUCED, READ, PASSED, AND ADOPTED BY THE COUNCIL OF THE CITY OF GLADSTONE, MISSOURI, THIS 25TH DAY OF JULY, 2022.



Bill Garnos, Mayor

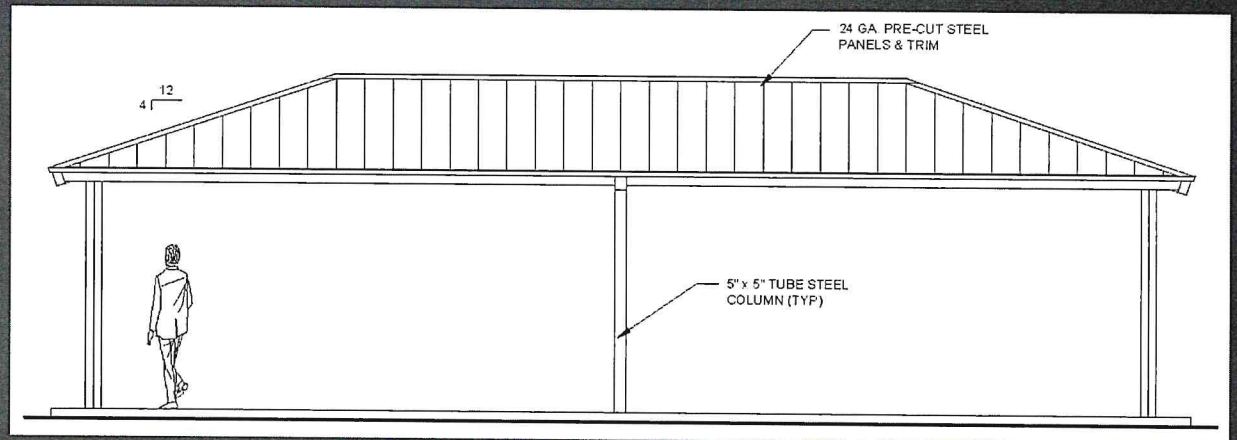
ATTEST:



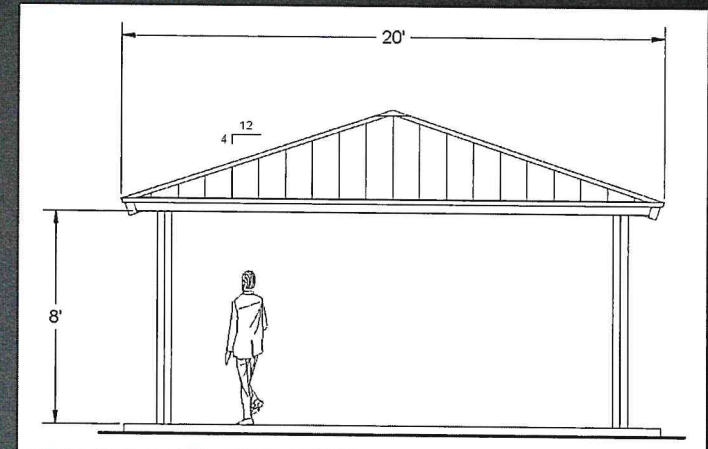
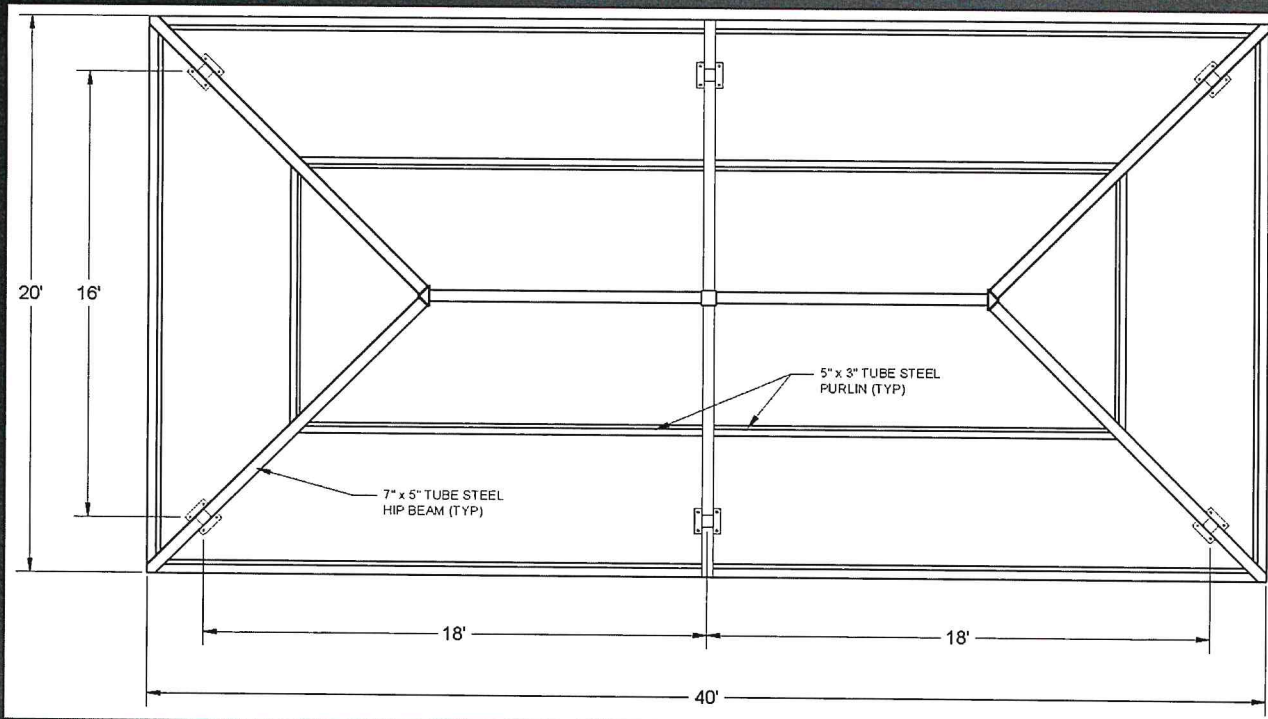
Kris Keller, City Clerk

SMALLER SHELTER – ATTRIBUTES/RENDERINGS

- 20x40 Rectangular Hip Shelter
- 8 Faux Stone Column Wraps 2x2x5' with limestone capstone
- 24 ga. Multi rib metal roofing
- Roof pitch 4:12 30 PSF live load and 115 mph wind speed

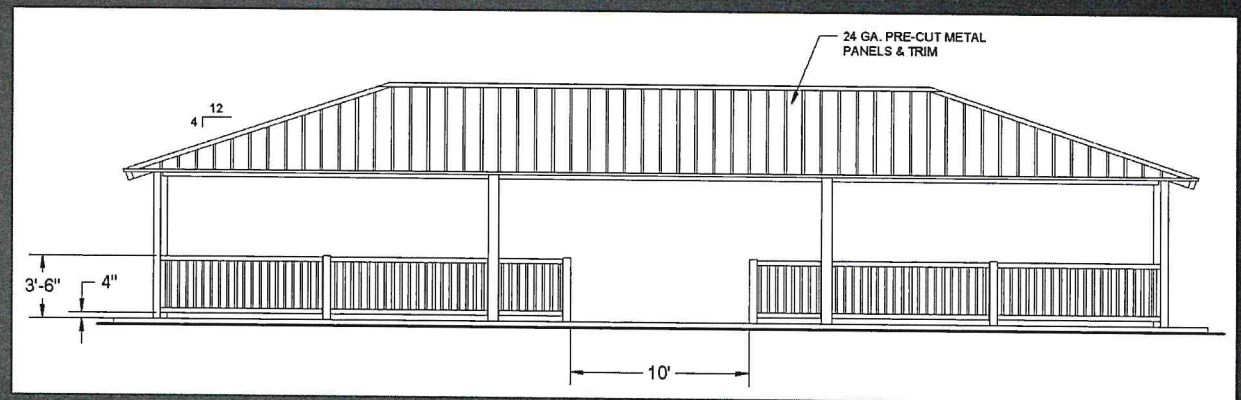


SMALLER SHELTER – RENDERINGS

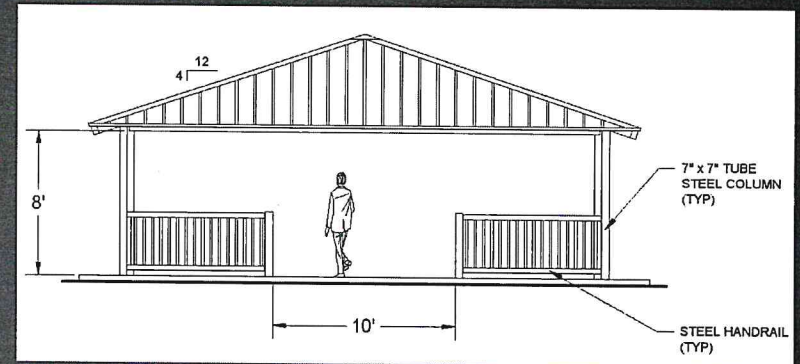
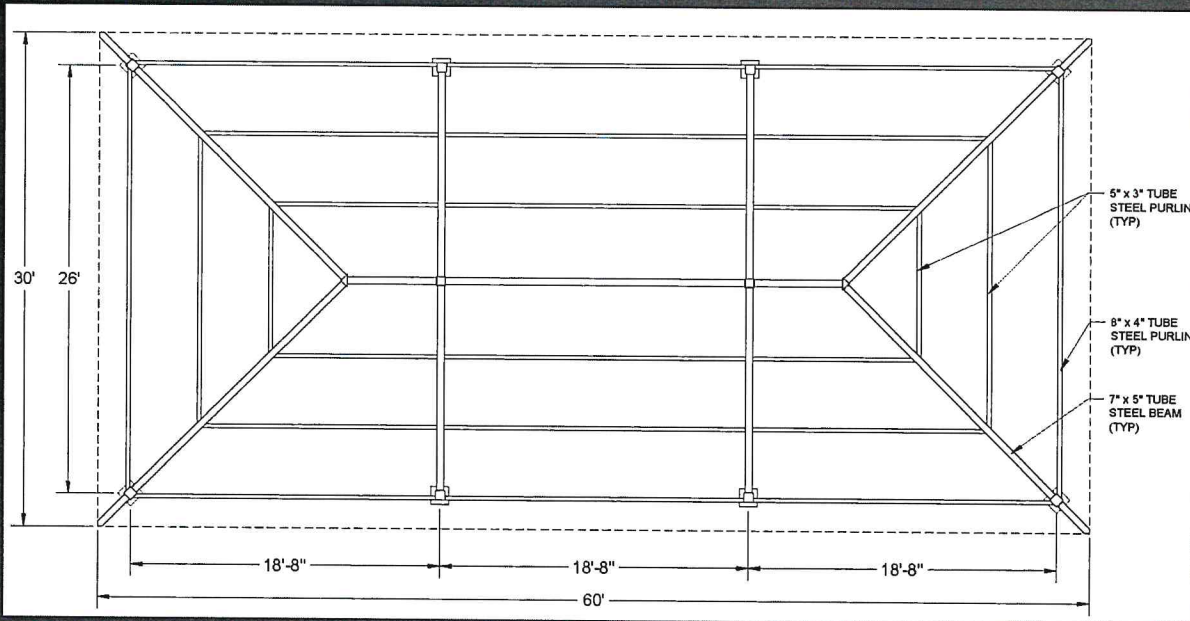


LARGE SHELTER – ATTRIBUTES/RENDERINGS

- 30x60 Rectangular Hip Shelter with 10' Eave Handrails
- 8 Faux Stone Column Wraps 2x2x5' with limestone capstone
- 24 ga. Multi rib metal roofing
- Roof pitch 4:12 30 PSF live load and 115 mph wind speed



LARGE SHELTER – RENDERINGS



OAK GROVE SHELTERS STYLE & COLOR OPTIONS



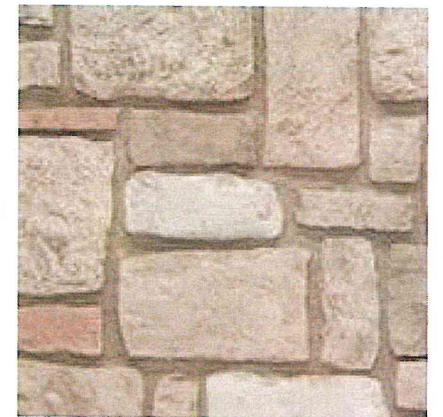
Cedar Forest Products
800.552.9495
www.cedarforestproducts.com

Color Options

CFP Stone - Tuscany



Almond Taupe



Desert Oasis

OAK GROVE SHELTERS – SIMULATED IMAGES



OAK GROVE SHELTERS – SIMULATED IMAGES



OAK GROVE SHELTERS – SIMULATED IMAGES



Playscape Recreation

101 S Pratt | PO Box 146

Yates Center, KS 66783

(620) 625-3800

kate@playscaperecreation.com

www.playscaperecreation.com



Quote

ADDRESS

City of Gladstone
6901 N Holmes St
Gladstone, MO 64118
United States

SHIP TO

City of Gladstone
6901 N Holmes St
Gladstone, MO 64118
United States

QUOTE # QUO-02213

DATE 07/11/2022

ACTIVITY	QTY	RATE	AMOUNT
<p>RDU 20x40 Rectangular Hip Shelter with 10' Eave Handrails per drawing--drawing size is wrong as we cannot go wider than 20 without major expense in fill. Electrical outputs and reduction will be done on engineered sheets and approved. electrical cutout- per post on bottom standard + where specified elsewhere for boxes/lights 8 Faux Stone Column Wraps 2x2x3' with limestone capstone Roof pitch 4:12 30 PSF live load & 90 mph Wind speed Powder coated still frame 24 ga. multi rib metal roofing tubular steel frame with zinc plated fasteners utilizes hidden bolts and fasteners where possible. Includes engineering cost of \$750 -excludes storage, unloading, clear coat or stain, gutters & downspouts and floor drains. We will do our best to coordinate unloading and installation at time of deliver. Manufacturer requires 25% down on structure kit portion only.</p>	1	62,907.10	62,907.10
<p>RDU 30x60 Rectangular Hip Shelter with 10' Eave Handrails per drawing Cut outs each post bottom, plus where you want them on ceiling/for a box.</p>	1	101,936.00	101,936.00

ACTIVITY	QTY	RATE	AMOUNT
8 Faux Stone Column Wraps 2x2x3' with limestone capstone Roof pitch 4:12 30 PSF live load & 90 mph Wind speed Powder coated still frame 24 ga. multi rib metal roofing tubular steel frame with zinc plated fasteners utilizes hidden bolts and fasteners where possible. -excludes storage, unloading, clear coat or stain, gutters & downspouts and floor drains. We will do our best to coordinate unloading and installation at time of deliver. Includes engineering cost of \$750			
Demolition Includes: removing all concrete and 3 buildings and hauling to landfill removal of amphitheater concrete and replacing with new concrete that extends to the N-E-S sidewalks. 130' of sidewalks with 4 aprons 25x45 pad & concrete slab after building erected Any additional areas of concrete add \$12/ft	1	141,483.75	141,483.75
Installation Install Steel shelters	1	25,760.00	25,760.00
RDU Steel cages & Concrete for shelters	16	575.00	9,200.00
Greenbush 20.6 ESC-PLAYGROUNDREC-2022 (CATEGORY: Playground)	1	0.00	0.00
bond Performance Bond	351,830	0.035	12,314.05

FREIGHT & SURCHARGE-DUE TO THE VOLATILE NATURE OF THE TRANSPORTATION INDUSTRY & SUPPLY CHAIN AT THIS TIME THESE ITEMS MUST BE RE-QUOTED AT THE TIME OF SHIPMENT. Installation: A certified manufacturer approved Installer is recommended for equipment install. Customer responsible for scheduling coordination and site preparation. Site should be level and permit installation equipment access. Purchaser shall be responsible for unknown conditions such as buried utilities, tree stumps, bedrock or any concealed material or conditions that may result in additional labor & material costs. Exclusions: unless specifically included, this quotation excludes all permits, site work and landscaping; removal of existing equipment; acceptance of equipment and off-loading storage of goods prior to installation; equipment assembly and installation; safety surfacing; borders and drainage provisions.

SUBTOTAL	353,600.90
TAX	0.00
TOTAL	\$353,600.90

Accepted By

Accepted Date



Request for Council Action

RES # R-22-42

BILL # City Clerk Only

ORD # City Clerk Only

Date: 7/20/2022

Department: Parks & Recreation

Meeting Date Requested: 7/25/2022

Public Hearing: Yes Date: [Click here to enter a date.](#)

Subject: Replacement of both Oak Grove Park Shelters

Background: The Oak Grove Park Shelters have surpassed the useful life and need replacement.

Budget Discussion: Funds are budgeted in the amount of \$353,600.90 from the OTHER Fund. Ongoing costs are estimated to be \$ 0 annually. Previous years' funding was \$0

Public/Board/Staff Input: Staff recommends replacing the current larger shelter with one of similar size (30'x60') that will include railings similar to the current shelter and stone columns that partially wrap the support beams. Staff is recommending the smaller shelters on the south side, be reduced to one shelter (20'x40') that will not have railings, but will have stone columns that partially wrap the support beams. This purchase will be made through the Greenbush Cooperative Purchasing Agreement.

Provide Original Contracts, Leases, Agreements, etc. to: City Clerk and Vendor

Justin Merkey
Department Director/Administrator

CW
City Attorney

SW
City Manager