

AN ORDINANCE AMENDING SCHEDULE V OF THE MODEL TRAFFIC CODE (GLADSTONE MUNICIPAL CODE SECTION 4.100.020) TO RESTRICT PARKING AT CERTAIN LOCATIONS IN THE TRAILS SUBDIVISION.

WHEREAS, The Homeowners Association Board voted to recommend the removal of on-street parking within its boundaries.

NOW, THEREFORE, BE IT ORDAINED BY THE COUNCIL OF THE CITY OF GLADSTONE, MISSOURI, AS FOLLOWS:


SECTION 1. RESTRICT PARKING IN THE TRAILS SUBDIVISION AS DESCRIBED BELOW AT ALL TIMES. SCHEDULE V of the Model Traffic Ordinance (Gladstone Municipal Code Section 4.100.020) is hereby amended by the addition of the following parking restriction locations:

SCHEDULE V - LOCATIONS

- | | |
|----------------|--|
| NO. 135 | BOTH SIDES OF NORTH KANSAS AVENUE FROM KENDALLWOOD INCLUDING BOTH LOOPS. |
| NO. 136 | BOTH SIDES OF NORTH BELLEFONTAINE FROM NORTHEAST 59TH TERRACE INCLUDING LOOP. |
| NO. 137 | BOTH SIDES OF NORTHEAST 59TH PLACE FROM NORTHEAST 59TH TERRACE TO NORTH KANSAS AVENUE |

SECTION 2. EFFECTIVE DATE. This Ordinance shall become effective from and after its passage.

INTRODUCED, READ, PASSED, AND ADOPTED BY THE COUNCIL OF THE CITY OF GLADSTONE, MISSOURI, THIS 25TH DAY OF AUGUST 2025.



Mayor Les Smith

ATTEST:



Kris Keller, City Clerk

1st Reading: August 25, 2025

2nd Reading: August 25, 2025



Request for Council Action

RES ☐ # City Clerk Only

BILL ☒ # 25-25

ORD ☒ # 4.709

Date: 8/19/2025

Department: Public Works

Meeting Date Requested: 8/25/2025

Public Hearing: Yes ☐ Date: N/A

Subject: Amend Schedule V of the Model Traffic Code to restrict parking at certain locations within The Trails subdivision as stated in the attached Bill.

Background: The Trails Homeowners Association Board voted to recommend the removal of on-street parking within its boundaries that are approximately located north of NE 59th Terrace, east of NE Kendallwood Parkway, and south of NE Brooktree Lane as shown on the attached map.

Budget Discussion: Funds are budgeted in the amount of \$ 750.00 from the General Fund. Ongoing costs are estimated to be \$0 annually.

Public/Board/Staff Input: The Department of Public Works and the Police Department recommend amending Schedule V of the Model Traffic Code to restrict parking at all times on both sides of streets within the Trails subdivision as stated in the attached Bill.

Provide Original Contracts, Leases, Agreements, etc. to: City Clerk and Vendor.

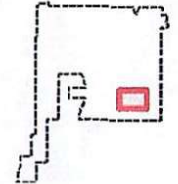
Timothy A. Nebergall
Department Director/Administrator

JA
City Attorney

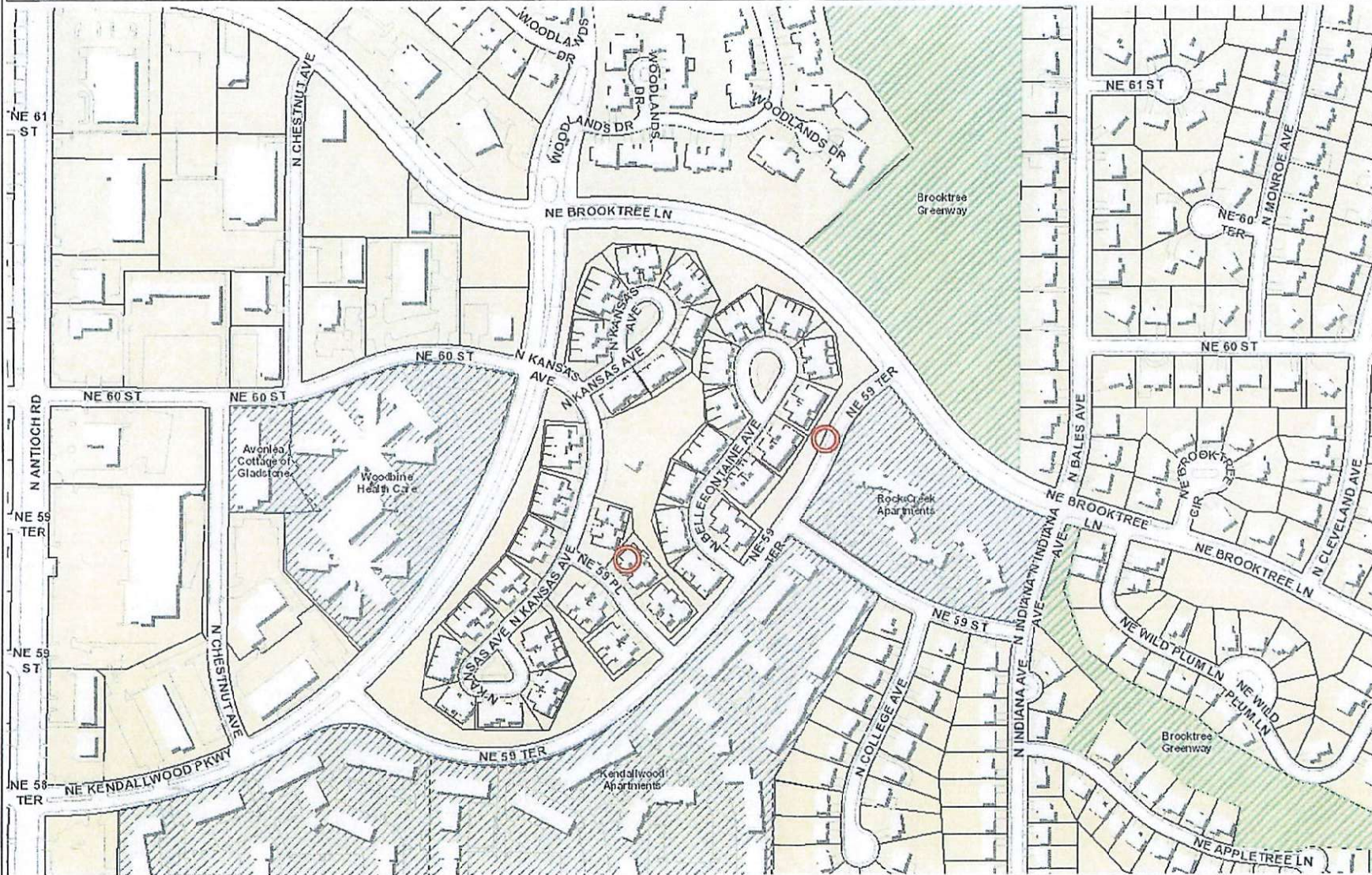
BB
City Manager



Gladstone, MO



- Legend**
- Street Centerline
 - Edge Of Pavement
 - Driveway
 - Gladstone.DBO.CityBldg_Rep
 - Gladstone.DBO.CityBldg_Repl
 - Apartment
 - City Park
 - School Parcel
 - Parcel
 - City Limits
 - City Mask



1 in. = 247ft.



Notes

493.2 0 246.58 493.2 Feet

This map is a user generated static output from an Internet mapping site and is for reference only. Data layers that appear on this map may or may not be accurate, current, or otherwise reliable.

THIS MAP IS NOT TO BE USED FOR NAVIGATION