

RESOLUTION NO. 21-50

A RESOLUTION SUPPORTING THE CO-LOCATION OF PUBLIC SAFETY ANSWERING POINTS FOR GLADSTONE, LIBERTY, EXCELSIOR SPRINGS, AND THE CLAY COUNTY SHERIFF'S DEPARTMENT AND TO AUTHORIZE THE CITY MANAGER TO PROCEED WITH THE DESIGN OF A COMMUNICATIONS AREA SUFFICIENT TO ACCOMMODATE CO-LOCATED DISPATCHING AS PART OF THE POLICE HEADQUARTERS PROJECT.

WHEREAS, there are seven (7) Public Safety Answering Points (PSAPS) in Clay County, not including Kansas City, Missouri; and,

WHEREAS, Communication Officers in these agencies answer and dispatch approximately 350,000 911 calls annually; and,

WHEREAS, the recent pandemic exposed potential vulnerabilities in terms of staffing redundancy; and,

WHEREAS, the intent of co-located emergency dispatch centers is to retain local control of each agency's operation while benefiting from functioning in the same physical space; and,

WHEREAS, each participating agency will continue to provide, operate, and maintain equipment and personnel sufficient to accommodate that agency's normal call volume; and,

WHEREAS, Gladstone has agreed to provide communication space to participating agencies in white box condition. Such space will be adequate to support eight (8) to twelve (12) consoles and related amenities; and,

WHEREAS, participating agencies will provide for all relocation expenses; and,

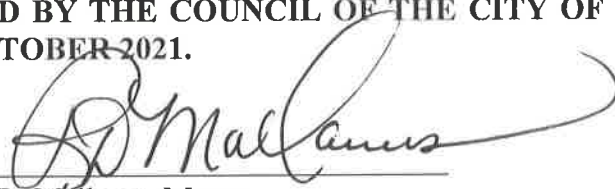
WHEREAS, a separate operating agreement will be necessary to accommodate a capital contribution and shared expenses such as utility, insurance, janitorial and similar expenses. Shared expenses will be calculated based on the number of consoles allotted to each agency; and,

WHEREAS, detailed discussions and formal agreements will be necessary to make a co-located communications center a reality.

NOW, THEREFORE, BE IT RESOLVED BY THE COUNCIL OF THE CITY OF GLADSTONE, MISSOURI, AS FOLLOWS:

THAT, the City Manager of the City of Gladstone, Missouri, is hereby authorized to proceed with attaining formal agreements from the City of Liberty, the City of Excelsior Springs, and the Clay County Sheriff's Department for co-location of emergency dispatch functions and further to continue with the design of a communication area adequate enough to accommodate co-located dispatch operations for the participating agencies.

INTRODUCED, READ, PASSED, AND ADOPTED BY THE COUNCIL OF THE CITY OF
GLADSTONE, MISSOURI THIS 25th DAY OF OCTOBER 2021.

A handwritten signature in black ink, appearing to read "R.D. Mallams", written over a horizontal line.

R.D. Mallams, Mayor

A handwritten signature in blue ink, appearing to read "Becky Jarrett", written over a horizontal line.

Becky Jarrett, Deputy City Clerk



Request for Council Action

RES ☒ # R-21-50

BILL ☐ # City Clerk Only

ORD # City Clerk Only

Date: 10/19/2021

Department: General Administration

Meeting Date Requested: 10/25/2021

Public Hearing: Yes ☐ Date: [Click here to enter a date.](#)

Subject: A Resolution supporting co-location of Public Safety Answering Points for Gladstone, Liberty, Excelsior Springs, and the Clay County Sheriff's Department and to authorize the City Manager to proceed with the design of a communications area sufficient to accommodate co-located dispatching as part of the police headquarters project.

Background: Co-location and consolidation of emergency dispatch operations has been talked about for many years. With the construction of a new police headquarters, we have a unique opportunity to design a space large enough to accommodate 8-12 dispatch consoles and allow for the concept of a single communications center that serves multiple agencies. A great deal of apprehension revolves around the word consolidation because there is a fear that each agency will lose some control over their present dispatch operation; however, by co-locating Communication Officers from each agency in a single location, there will be an opportunity for agencies to benefit from the concept of personnel redundancy and also maintain control of their own dispatch operation. In addition, each agency will benefit from a newer, state of the art facility that will have modern amenities for their communications personnel. This resolution will authorize the City Manager to pursue those agreements with the other named agencies as well as continue with the design of a larger communications space, which can accommodate this type of emergency dispatch operation. The cost of expanding the communications area beyond our present three (3) consoles is expected to be shared among the other participating agencies.

Budget Discussion: Funds are budgeted in the amount of \$ 300,000 from the OTHER Fund. Ongoing costs are estimated to be \$ 0 annually. Previous years' funding was \$0

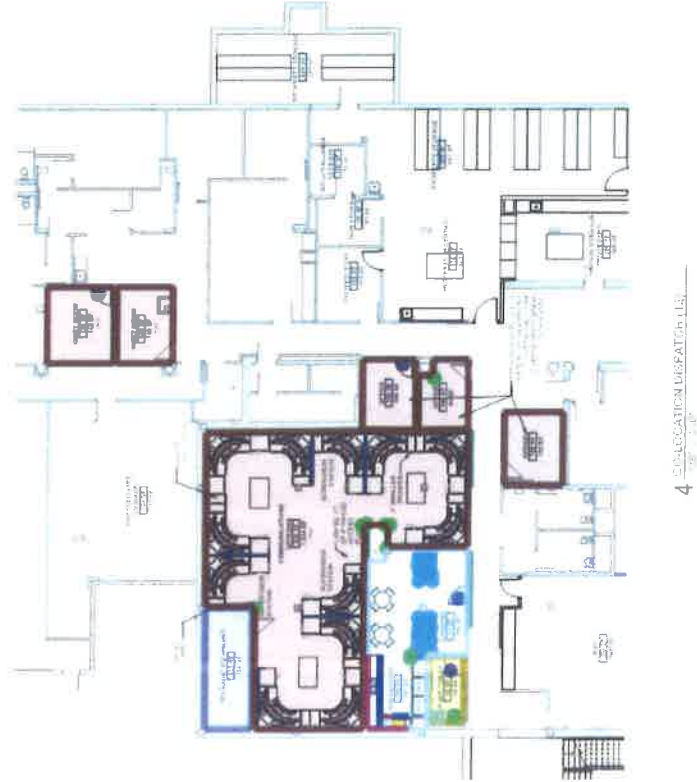
Public/Board/Staff Input:

Provide Original Contracts, Leases, Agreements, etc. to: City Clerk and Vendor

Robert M Baer
Assistant City Manager / Emergency Services

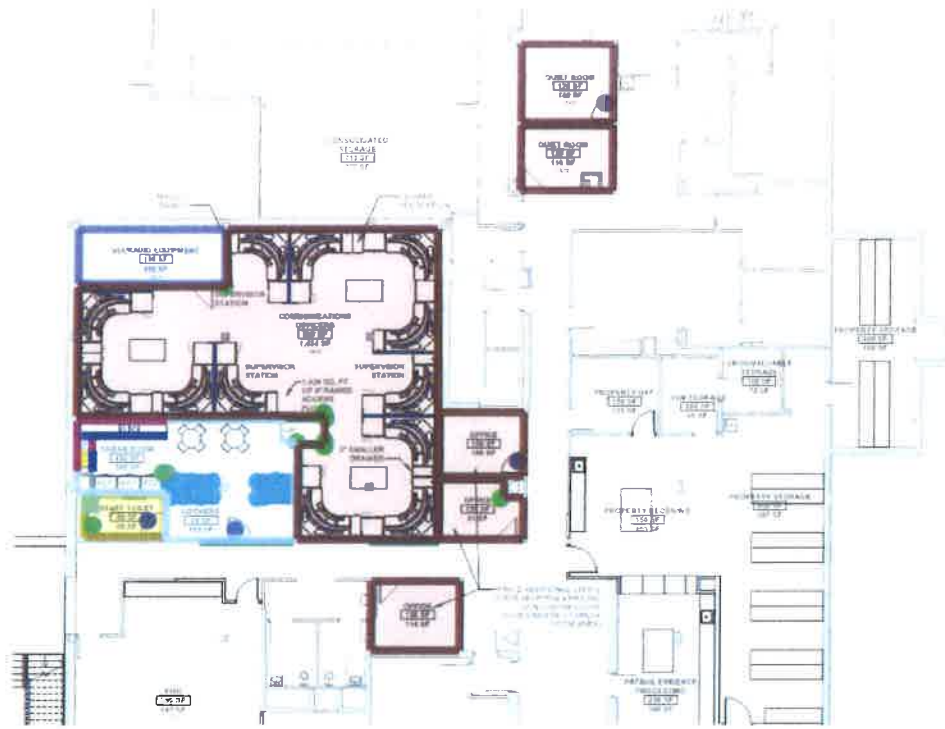
JM
City Attorney

SW
City Manager



Legend

C-Interiors\C1010-Interior Partitions\C1010.10-Interior Fixed Partitions	34 no
C1010.10.1300-GWB partitions, non-rated - 3-5/8" studs, 2,831 ft2	76 no
GWB both sides	669 ft2
C-Interiors\C1030-Interior Doors\C1030.10-Interior Swinging Doors	259 ft2
C1030.10.0700-Interior swinging doors, HM frame, wood door - single	619 ft2
C-Interiors\C1090-Interior Specialties\C1090.35-Wall and Door Protection	1,595 ft2
C1090.35.0100-Corner guards	6,300 ft2
C-Interiors\C1090-Interior Specialties\C1090.70-Storage Specialties	4 no
C1090.70.0100-Lockers, metal	4 no
C-Interiors\C2010-Wall Finishes\C2010.10-Tile Wall Finish	4 no
C2010.10.0200-Porcelain wall tile	
C-Interiors\C2030-Flooring\C2030.20-Tile Flooring	
C2030.20.0200-Porcelain tile flooring	
C-Interiors\C2030-Flooring\C2030.30-Specialty Flooring	
C2030.30.0500-Concrete finishes, sealed	
C-Interiors\C2030-Flooring\C2030.50-Resilient Flooring	
C2030.50.0100-Resilient tile flooring	
C-Interiors\C2030-Flooring\C2030.75-Carpeting	
C2030.75.0100-Tile carpeting	
D-MPPF\Plumbing_Plumbing Fixtures	
Lavatories - wall hung	
Sinks - single bowl	
Water closets - wall mount, flush valve	
E-Equipment and Furnishings\E2010-Fixed Furnishings\E2010.30-Casework	
E2010.30.0800-Casework, plastic laminate base cabinets	61 ft
E2010.30.0900-Casework, plastic laminate wall cabinets	78 ft
E2010.30.5500-Countertops, solid surface	61 ft



4 CO-LOCATION DISPATCH (12)

Co-Location Dispatch (12)

GWB partitions, non-rated - 3-5/8" studs, GWB both sides	811	sf
Interior swinging doors, HM frame, wood door - single	4	ea
Door hardware, simple, w/closer hardware	4	ea
Installation of Doors, Frames and Hardware	16	hr
Paint/stain doors	4	ea
Paint door frames	4	ea
New Acoustical Ceilings - 2x2	2,749	sf
Acoustical Ceiling repair/replace	2,749	sf
Corner Guards, acrovyn	9	ea
Toilet accessories (per toilet)	1	ea
Lockers, Z type double	26	ea
Porcelain wall tile in bathroom	184	sf
Paint, standard GWB	5,319	sf
Porcelain tile flooring in bathroom	72	sf
Porcelain tile flooring base in bathroom	37	lf
Concrete finishes, sealed in Equipment room	171	sf
Resilient tile flooring LVT in break room	458	sf
Tile Carpeting in pod space, office, and quiet rooms	2,220	sf
Rubber Base	664	sf
Single bowl sink	1	ea
Water closet	1	ea
Lavatory	1	ea
Casework, p-lam base cabinets	15	lf
Casework, p-lam wall cabinets	19	lf
Countertops, solid surface	30	sf
Casework Install	1	ls
Telecommunications	2,721	gsf
Electrical Work	2,721	gsf
Selective Interior Demolition	2,721	gsf
6" Raised Access Flooring	1,434	sf
Access flooring, ramp	19	sf
General Requirements	0.00%	